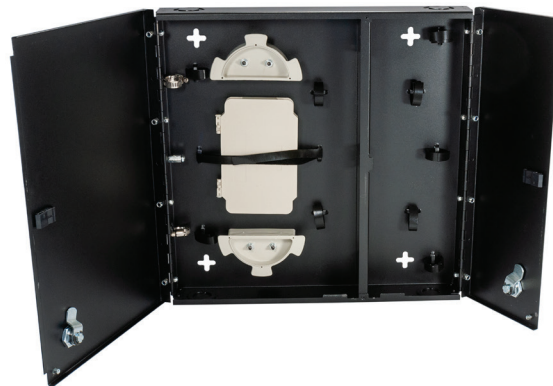


Wall Mount and Patch Enclosure

Small, empty w/split metal door, one lock/key

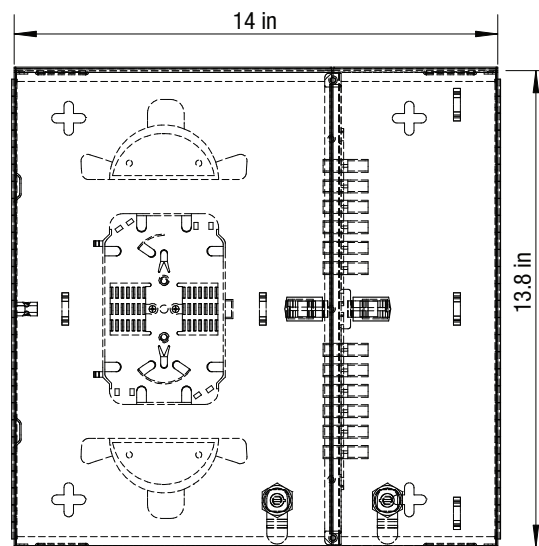


Cleerline SSF™ wall mount fiber distribution units are designed to support patching and splicing in one unit. The enclosure has 2 adapter panel positions, allowing for a wide variety of fiber termination connector types. Two compartments separate the network terminations from the distribution terminations, and the unit has a double outer door with key lock.



FEATURES AND BENEFITS

- Accommodates up to 2 SSF™ LGX-118 compatible adapter plates or MPO modules
- Cable entry tie down points
- Double door with key lock
- Top or bottom cable entry
- LGX® compatible adapter plates
- Compliant with NEMA-2 Standards



SPECIFICATIONS

Adapter Plates	2
Splice Trays	Included
Dimensions	13.8" H x 14" W x 2.2" D
Packaging	19" H x 16" W x 9" D
Weight	7.1 lbs empty
Material	Aluminum, black powder coat
Compatible with	SSF™ adapter plates

PART NUMBER

DESCRIPTION

SSF-SWM-SPLIT-WL-E2	Small, empty with split metal door, with key lock
---------------------	---------------------------------------------------

CLEERLINE TECHNOLOGY GROUP, LLC

8404 El Way Drive #2B, Missoula, MT 59808 USA & CAN: 866-469-2487 Fax 406.532.0060 Int'l +1.406.541.9830 Int'l Fax 1.406.532.0060
Web: www.cleerlinefiber.com Copyright 2012 Cleerline Technology Group, LLC. All rights reserved. Subject to change without notice.

Date: 3/20/2020 Rev. 1.7